



UNC225

通用型X射线实时成像检测设备

General Utilization NDT Real-time Imaging X-ray – UNC225

检测图像：Detection Image



缸盖 (夹杂)

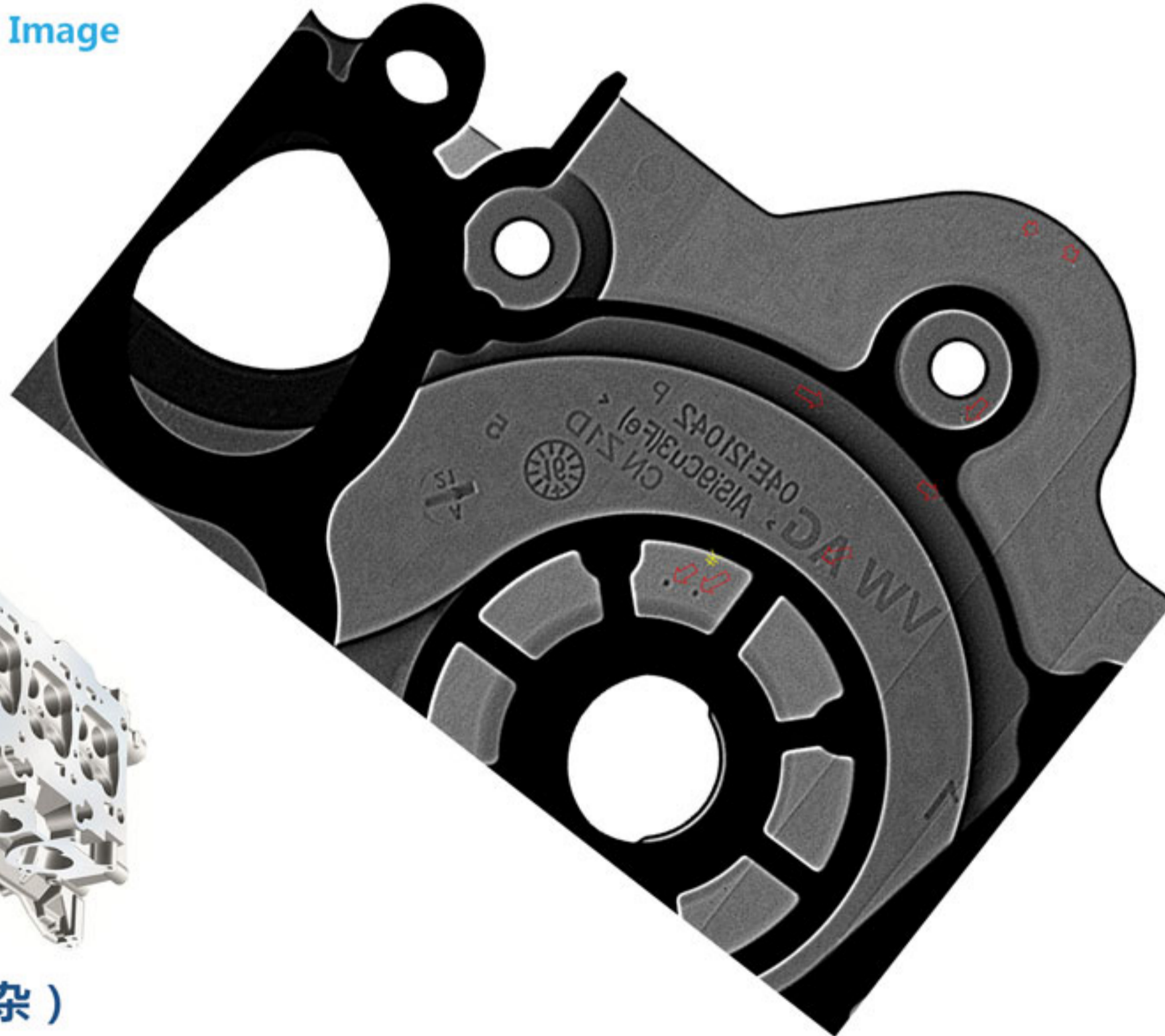
Cylinder head (inclusion)

产品应用：

- 高压开关
- 铝铸件、铁铸件、汽车部件
- 机械焊接件、钢管、钢瓶

Applications：

- High voltage switch
- Aluminum castings, iron castings, auto parts
- Mechanical welding, steel pipe, steel cylinder



技术参数：Technical Specifications

通用型X射线实时成像检测设备	
系统参数	
外观尺寸	2230mm*1582mm*2478mm(L*W*H)
设备重量	5T
整机功率	8KW
最大穿透力 (AL/FE)	150mm/25mm
检测范围	Φ500*800mm
载重量	100kg
工作环境	5-40° ≤80%HR
安装电源	三相五线制 380V电源
射线泄漏剂量率	≤1μSv/h
X射线系统	
管电压	225kV
功率	640W/1600W
焦点尺寸	1.0mm/3.0mm
探测器	
成像视野 Φ215mm	探测器 (选配FPD)
分辨率 2.8LP/mm	成像面积 250mm×300mm
	像素矩阵 1792×2176
	像素尺寸 139μm
	帧率 9 fps (1×1) 30 fps (2×2)
软件功能	
图像处理：亮度、对比度调节；帧数叠加；窗宽窗位调节；图像增强、滤波、锐化、反色、浮雕及气泡测量；移动、放大、缩小；显示图像缩放比例；显示当前鼠标所在图像坐标及灰度值	
图像测量：距离、半径、多边形、角度测量；箭头和文字标签；保存处理后图像；	
其它：设置相机旋转画面；曝光时间；静态、动态图像显示、保存、视频显示、保存；	
附加特性	
分段折叠式小车进出机构，方便检测工件上下料。	
C型臂检测机构，无死角检测	
驱动马达变频控制，无极调速。	
铅门有防夹功能及连锁保护，保护设备及人身安全。	
稳压、隔离、滤波、接地等保护功能齐全	
预留工业云接口，数据及图片实时上传，具备可追溯性及大数据分析（选配）。	

General Utilization NDT Real-time Imaging X-ray	
System Parameters	
Dimensions	2230mm*1582mm*2478mm(L*W*H)
Equipment weight	5T
Power	8KW
Maximum penetration (AL/FE)	150mm/25mm
Detection range	Φ500*800mm
Load weight	100kg
Work environment	5-40° ≤80%HR
Power supply	Three-phase five wire system AC380V
X-ray leakage dose rate	≤1μSv/h
X ray generator	
Tube voltage	225kV
Power	640W/1600W
Focal size	1.0mm/3.0mm
Detector	
Image area Φ215mm	Detector (Selection FPD)
Resolution 2.8LP/mm	Image area 250mm×300mm
	Pixel pitch 1792×2176
	Pixel size 139μm
	Frame rate 9 fps (1×1) 30 fps (2×2)
Software function	
Image processing: brightness and contrast adjustment; stacking frames, window width and level adjustment; image enhancement, filtering, sharpening, invert, relief and bubble measure; move, zoom in, zoom out display image scaling, display the current mouse coordinates and gray values	
Image measurement: distance, radius, polygon, angle measurement; arrows and text labels; save the image after processing;	
Others: setting the camera rotating screen; exposure time; static, dynamic image display and save, video display and save;	
Additional function	
CNC programmable control, to save the detection time of the bulk of the workpiece.	
C type arm five detection mechanism, no dead angle detection	
Servo stepper motor drive, stable operation.	
Voltage regulator, isolation, filtering, grounding and other protective functions are complete	
Set aside industrial cloud interface, data and pictures in real time upload, with traceability and large data analysis (optional).	

设备尺寸平面图 Machine Footprint

